

PHILIPPGROUP

Professional Solutions for Heavy Tasks



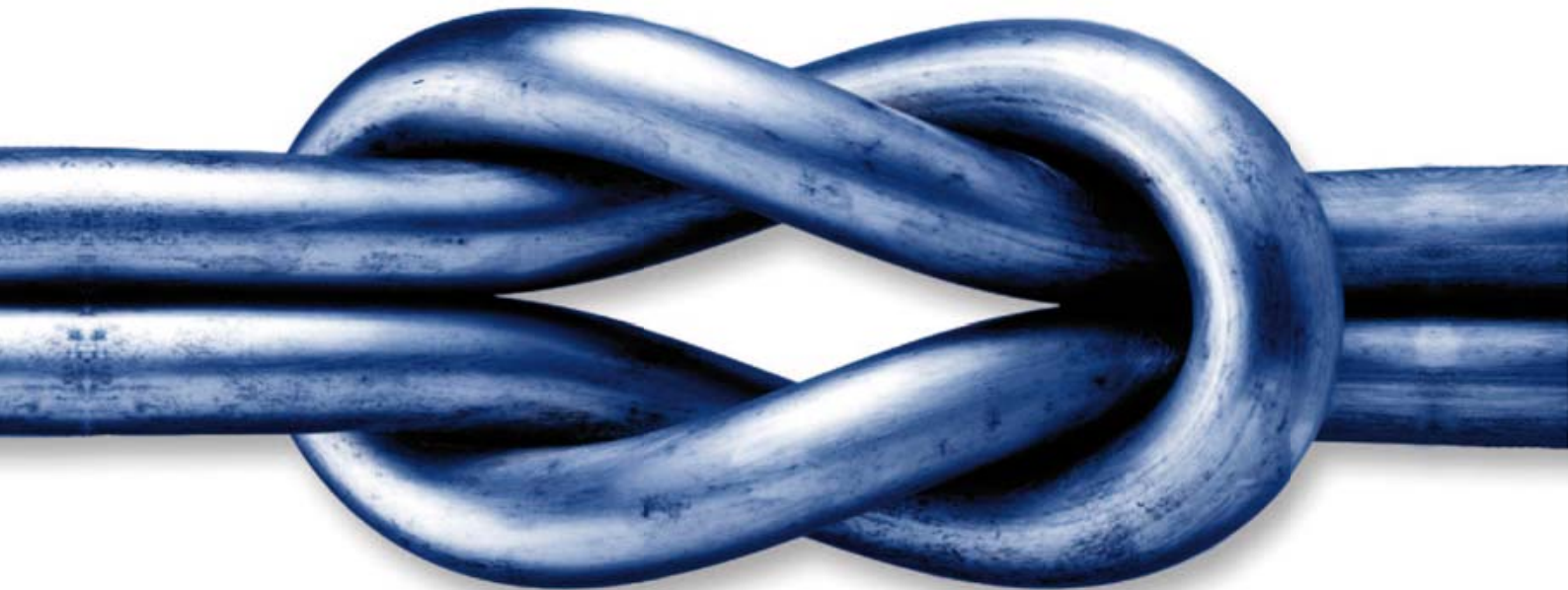
VB3-IM-001-en - 11/16 - 1/250

www.philipp-group.de

Sustainable
solutions

PHILIPP
GROUP

Sustainable solutions



Thousands of heavy concrete elements for building projects are lifted, transported and mounted every day all over the world.

These permanent movements are our challenge concerning reliability and safety.

We provide required strength and stability to achieve aims confidently - for more than 40 years.

Our experience, expertise, innovation strength and our certified quality “Made in Germany” are combined with a high degree of sense of responsibility, sustainability and reliability for our area, our dedicated employees and our customers in Germany as well as worldwide.

More than 40 years
of trust

PHILIPP
GROUP

We provide strength and stability in an ever-changing world.



Dear business partner,

The PHILIPP Group headquartered in Aschaffenburg, Germany, is family owned and one of the largest midsize companies in northern Bavaria and operates as an international production and trading company successfully.

With about 300 employees at four different locations and more than 30 strategic partners abroad we are one of the leading suppliers of transport and mounting systems for prefabricated buildings, hydraulics, pneumatics and power units as well as lashing/lifting equipment and wire rope technology. Numerous patents and industrial property rights reflect our innovative strength and technical know-how.

Our aims – ambitious, customer focused and feasible

Our main objective is to achieve the highest-possible customer satisfaction serving best service and well-engineered products. Individual challenges we meet with customized solutions.

Benefit from our competence.

Being dedicated to progress we combine keeping proven solutions and integrating successful grown structures into technological advance. We have managed this so far. Today our company shows stability in performance, customer services, high quality standards and personal commitment. TÜV certification in accordance to DIN EN ISO 9001:2008 documents these efforts.

We thank you for your interest and confidence.


Thorsten Philipp and his team



Professional Solutions for Heavy Tasks



Updating our current transport and mounting systems for prefabricated units as well as developing new and individual ideas, are the main targets for our technical department. Our customer's requirements lead us to customized system solutions for a quick and safe installation of massive precast concrete elements. We design in close contact with our customers in order to ensure our ideas meet their requirements. Then in our own production facilities we are able to realize these ideas immediately.

On-site-support is an essential part of our range of services. Our experts are open to visit your precast plant to train your staff regarding the correct use of PHILIPP products and optimizing your production processes.





Our continuous close cooperation with several test labs and institutes ensures that our components are safe, usable and approved:

Additional helpful innovations by PHILIPP:

- We provide free software solutions for the calculation of e.g. concrete sandwich panel anchors or our connection solutions. Useful tools to solve heavy tasks easily and individually.
- The PHILIPP animated films are the graphical illustration of using our transport and mounting systems correctly. They explain and train in an easily understandable way how to use our products and their advantages. Finally the visual presentations simplify a training of your new employees.

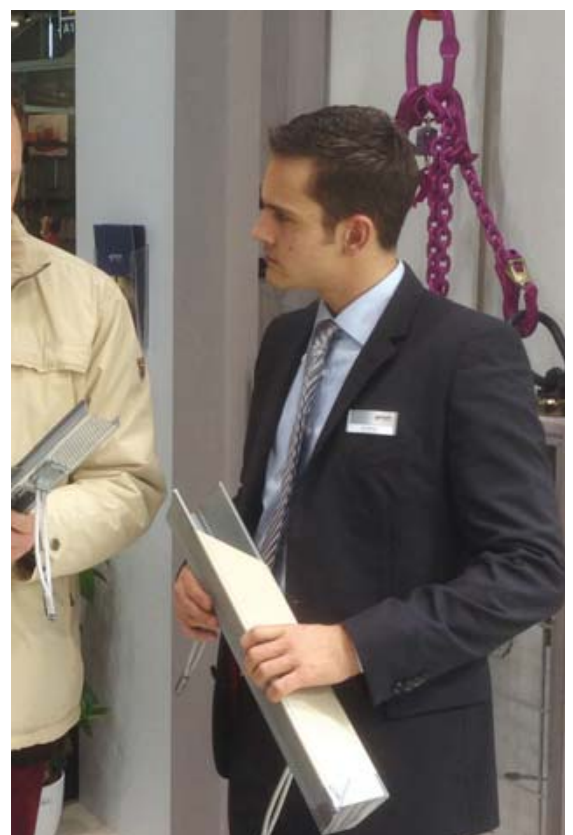




Our guideline for new developments: Finding the best possible user benefit and new fields of application.

The product engineering follows a specific plan according to the needs of the market – besides a continuous and systematic requirements analysis the close cooperation with our customers gives us the additional information about the readiness for the series production of a new development.

One of our distinctive strengths, much appreciated by customers, is capability to meet individual requirements with customized solutions. This includes customer specific installation proposals as well as technical documentations and on-site training – wherever our products are used.

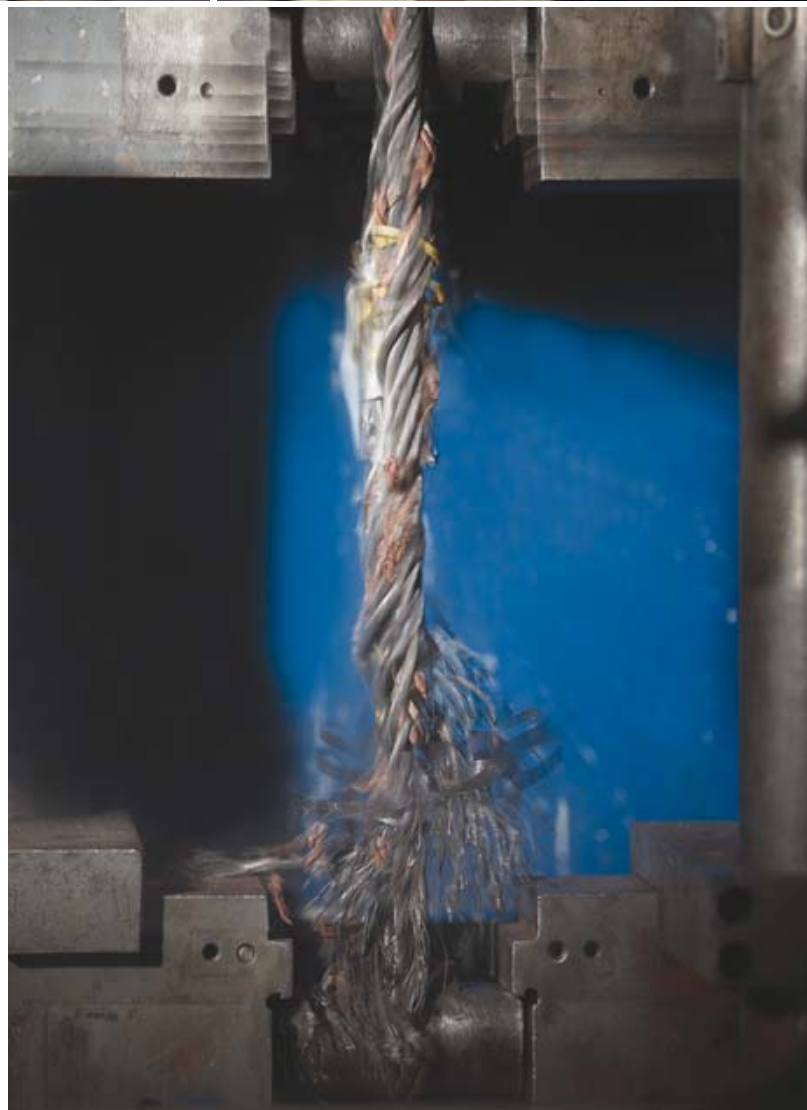


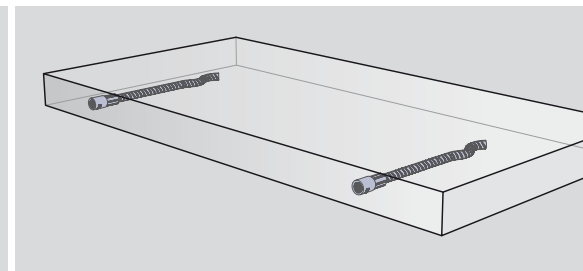
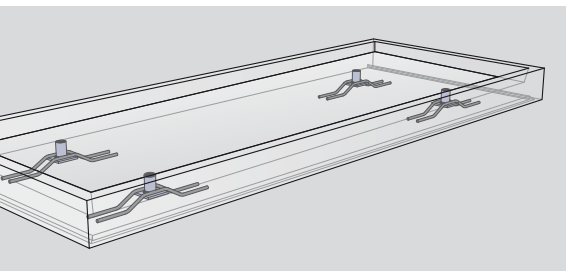
Development and Innovation



Due to our management certification in accordance with DIN EN ISO 9001:2008 quality testing is another task our specialists have to deal with continuously.

Mutual knowledge transfer has also significant importance for the PHILIPP Group. Therefore we are member of Fachverband Seile und Anschlagmittel e.V. (FSA, German Association for ropes and rigging equipment) as well as Fachvereinigung Deutscher Betonfertigteilbau e.V. (FDB, German Association for Precast Concrete Construction). Also we are an active participant in the European Engineered Construction Systems Association e.V. known as ECS. Our know-how does not just belong to us.

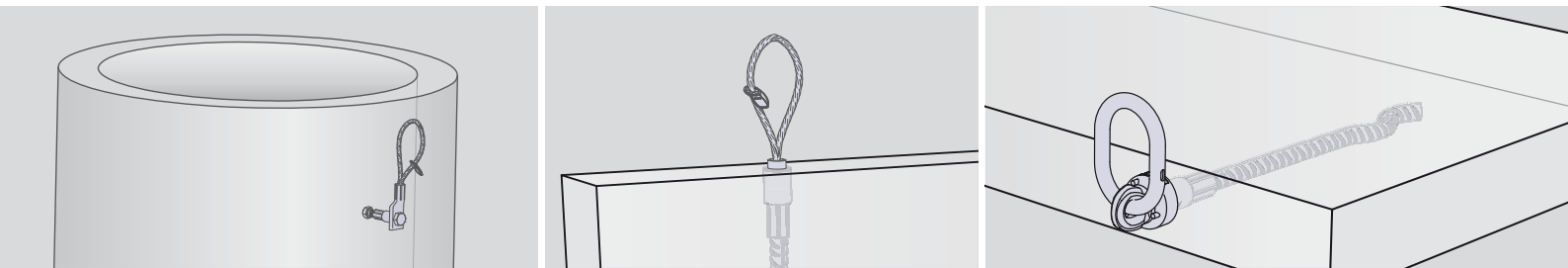




- ideally fitted to your requirements as the system is divided into 12 load levels
- maximum load bearing capacity 20 tons
- can be installed face side and plane side in concrete elements
- due to its slim design threaded anchors are suitable for thin panels e.g. garages, manholes or boxes
- ideally matched installation accessories simplifies mounting
- no parts sticking out of the unit
- minimized recesses in concrete units can be covered with stainless steel sealing caps to achieve a high quality fair-faced concrete

Threaded anchors

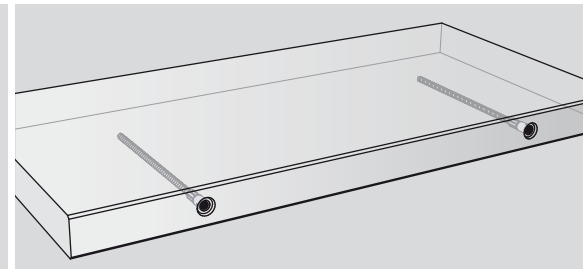
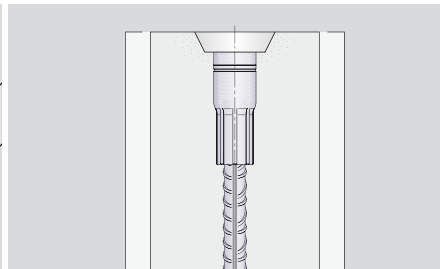
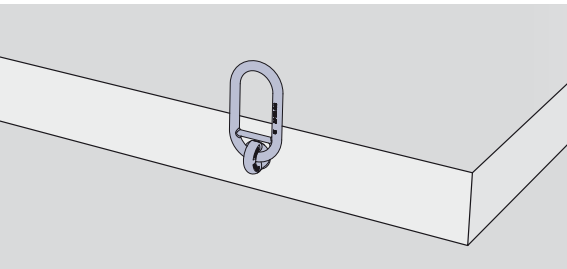




- lifting devices meet your requirements
- suitable for different areas of application (e.g. axial, diagonal or lateral load)
- maximum load bearing capacity 20 tons
- simple and safe handling of lifting devices
- guaranteed free rotation under load, therefore an optimal alignment to the lifting legs
- various fields of application, e.g. transport of walls, slabs, manholes or shafts

Lifting devices for threaded anchors

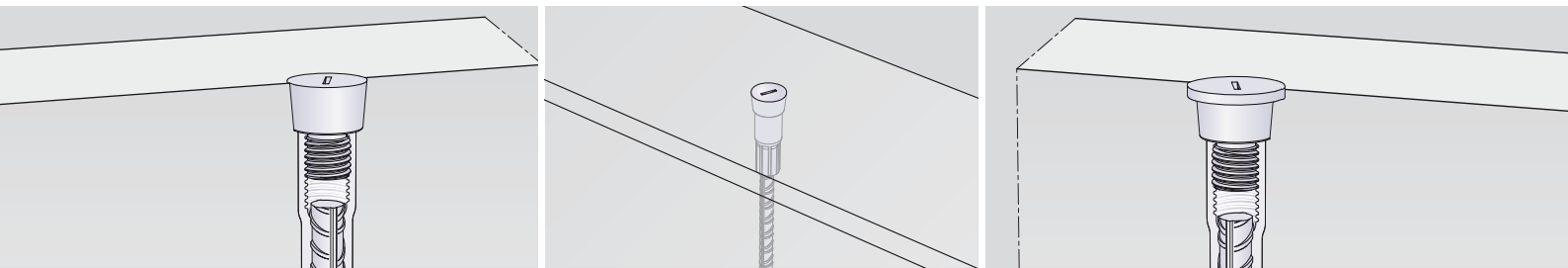




- higher load bearing capacity up to 20 tons with comparable anchor dimensions
- higher safety due to left hand thread (no combination with standard systems possible)
- simplified design because of reduced load levels
- smaller dimensions compared to standard anchors
- one lifting device for all load directions
- optimized storage by less product variety
- simple optical determination due to black galvanized socket

Power System SL

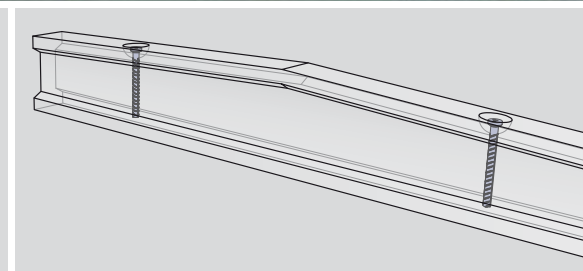
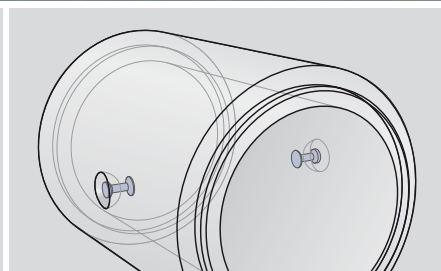
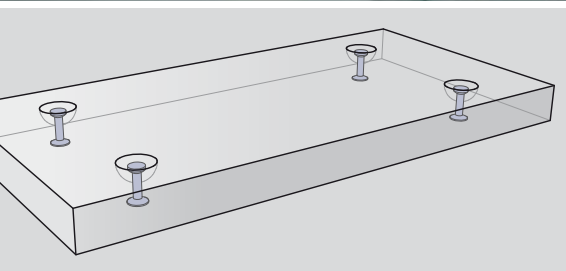




- suitable fixing devices for thread sizes M/RD 12-24 (with recess diameter $\text{\O}27$ mm) and M/RD 30-52 (with recess diameter $\text{\O}48$ mm)
- perfect matched sealing caps available in plastic and stainless steel
- plastic sealing caps also available in different colours
- thread-independent stainless steel cap for a simple sealing

KH System

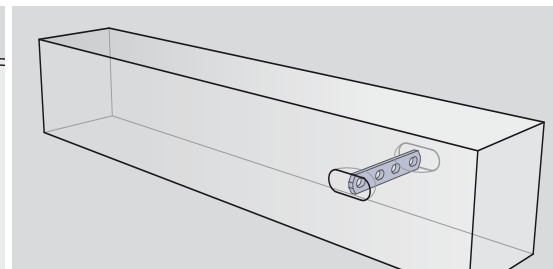
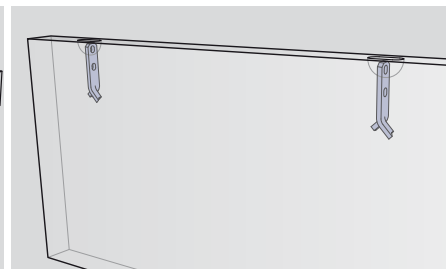
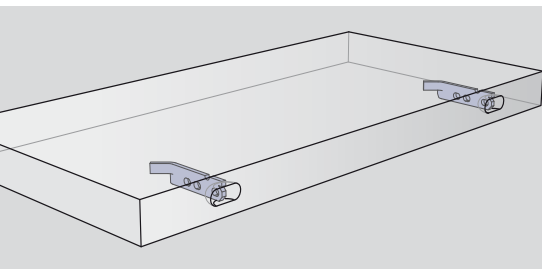




- system divided into ten load levels up to a maximum load capacity of 32 tons
- variable applications (e.g. walls, slabs, beams, pipes and much more)
- can be used for axial, diagonal or lateral lifting
- simple and safe coupling of anchor and lifting device
- no parts sticking out of the unit
- simple installation because of rotation-symmetrically shaped anchor
- long-lasting lifting device

Spherical head anchor system

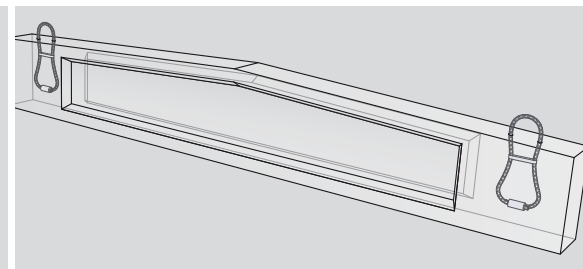
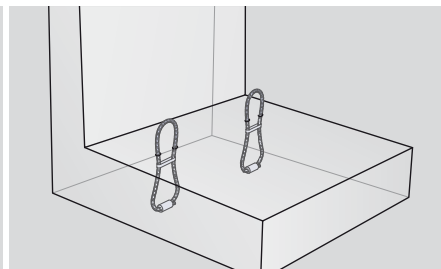
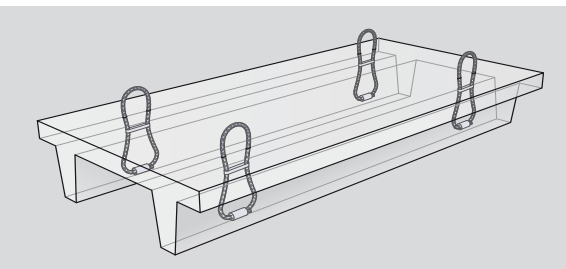




- system divided into four load levels up to a maximum load capacity of 26 tons
- numerous anchor types available, hence in many different application fields usable
- fast, simple and safe rigging with ring clutch
- long-lasting lifting device with exchangeable safety lock

Hole anchor system

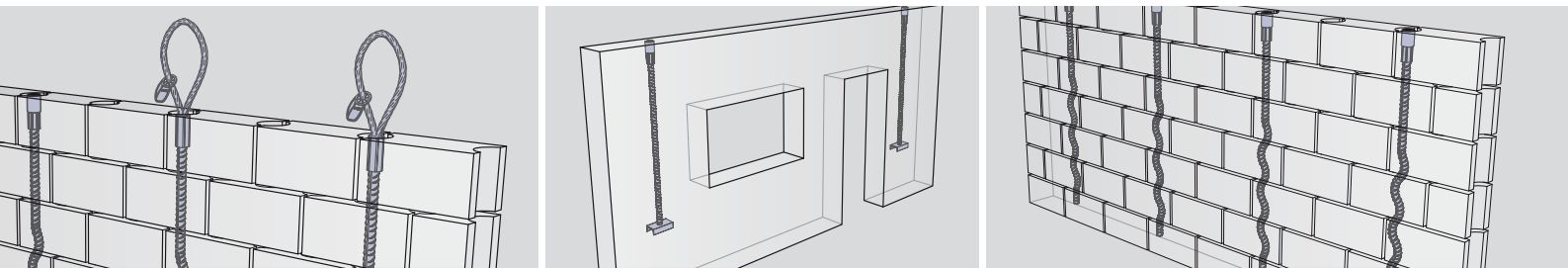




- perfect solution for extreme heavy and massive units (e.g. columns, girders, bridge elements, TT-slabs)
- load bearing capacities in load levels up to 25 tons by default (special solutions up to 99 tons on request)
- installation without any additional tools
- no special lifting device required – can be lifted with a standard hook directly
- consists of flexible high strength wire rope which aligns with the tensile direction automatically
- suitable for axial and diagonal loading

Cast-in lifting hoops

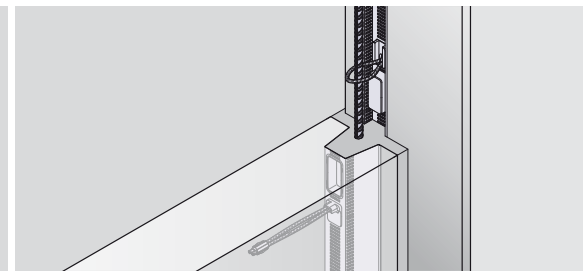
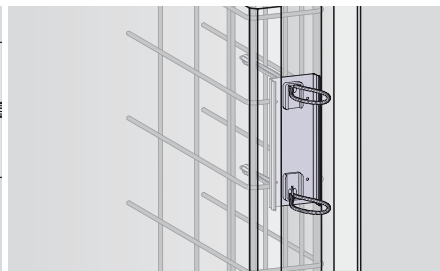
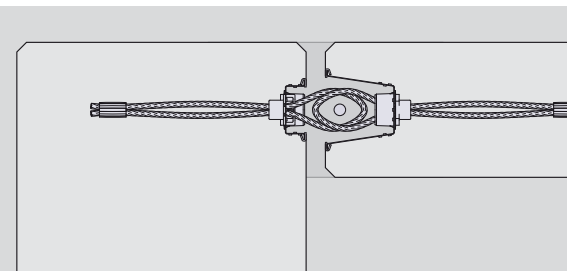




- maximum load bearing capacity of 4 tons
- u-shaped steel profile ensures safe load transfer from the anchor into the light weight concrete
- available with crimped loop, threaded insert or spherical head anchor
- optimally harmonised installation tools simplify mounting
- due to its slim size suitable for small grouting channels in masonry walls

Light weight concrete and masonry anchors





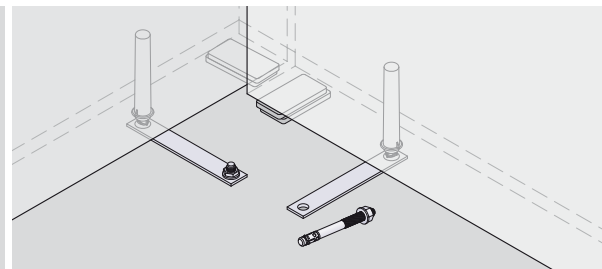
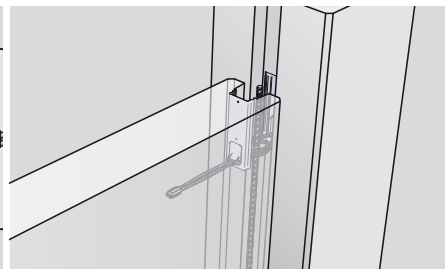
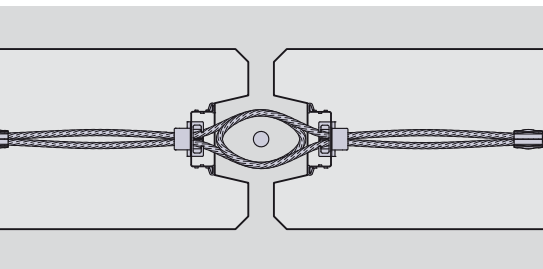
- Power Box and Power Duo with German approval
- flexible steel wire loops allow mounting of walls and columns in special situations like corner connections, T-connections or walls between columns
- shear forces parallel up to 90 kN/m
- shear forces at right angle up to 37,5 kN/m (depending on wall thickness and concrete grade)
- tension forces (Power Duo)
- can be used in wall thicknesses starting with 14 cm
- approved fire resistance up to R180
- Can be used with standard grouting mortar and thixotropic mortar from different suppliers.



Simple online calculation at www.philipp-group.de

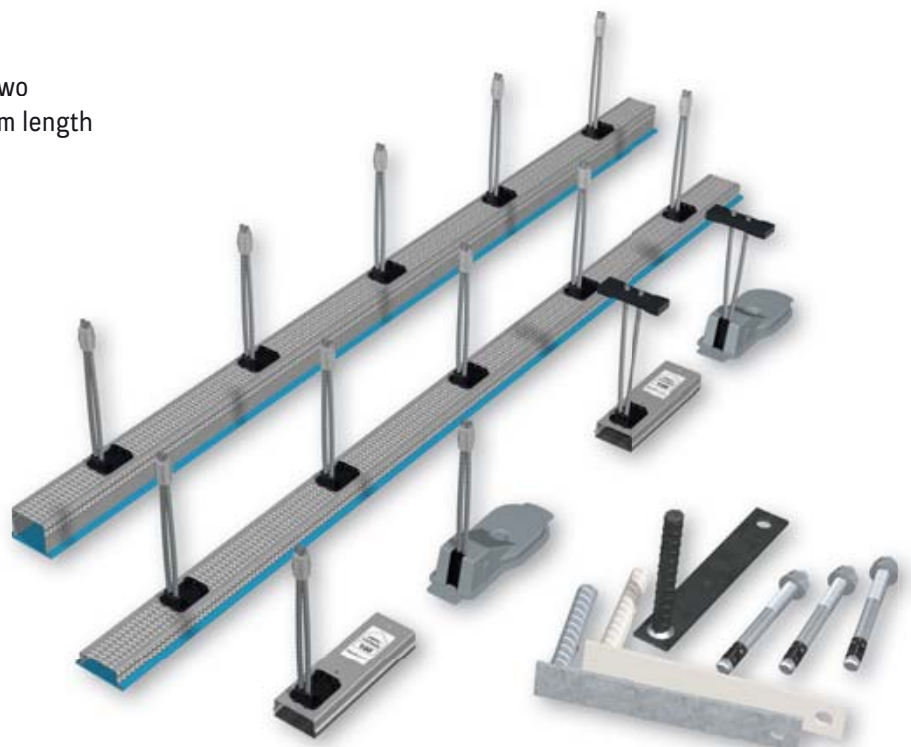
Connecting technique (for high forces)

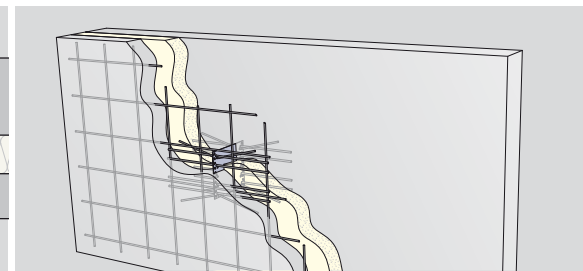
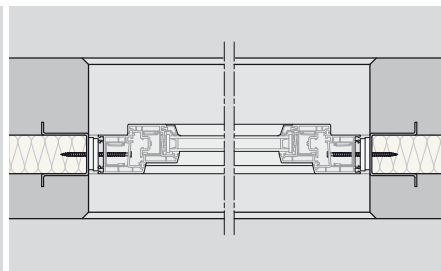
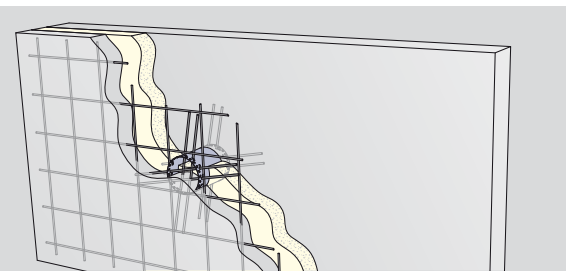




- perfectly suited for the connection of precast units
- wall/column and T-connection: e.g. combination of a 70 mm and 20 mm high rail including a loop of 100 mm length
- wall/wall connection: e.g. combination of two 40 mm high rails including a loop of 100 mm length
- simple and safe mounting with timber board or existing joint geometry of the recess former
- special width of recess former: 60 mm and 85 mm
- Four different loop lengths, number of possible loops 2, 3 or 5
- approved fire resistance up to R180
- solutions also for lightweight concrete available

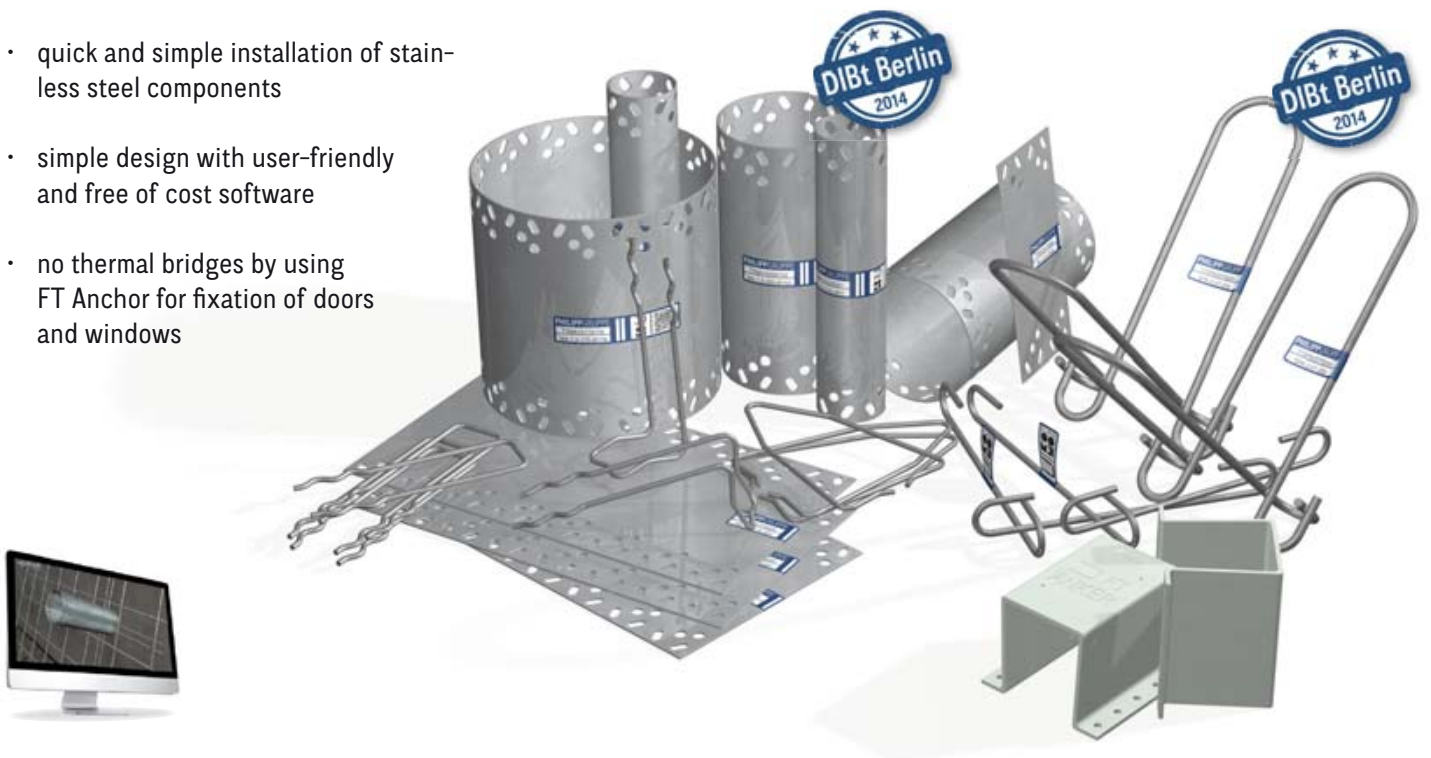
Connecting technique (for constructive connections)

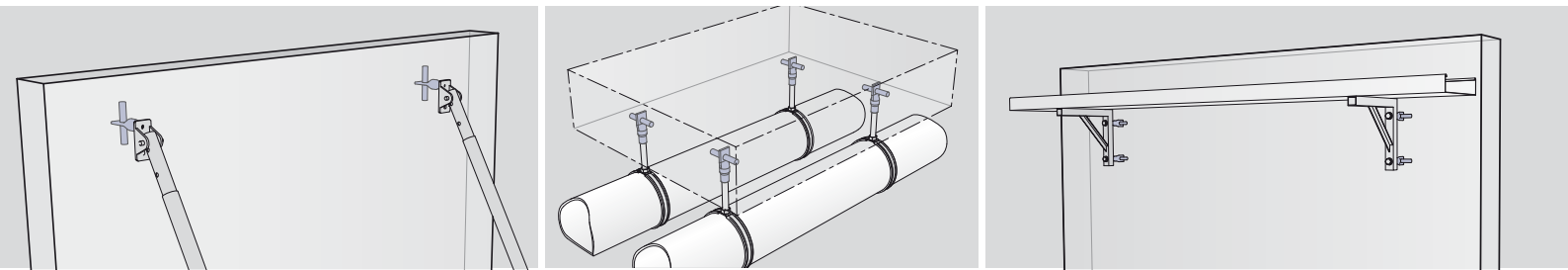




- certified systems: SPA, Sleeve-/Flat Anchor (SA-FA)
- well-proven systems to connect a facing layer to a bearing layer of sandwich panels
- thickness of insulating layer up to 40 cm designable
- quick and simple installation of stainless steel components
- simple design with user-friendly and free of cost software
- no thermal bridges by using FT Anchor for fixation of doors and windows

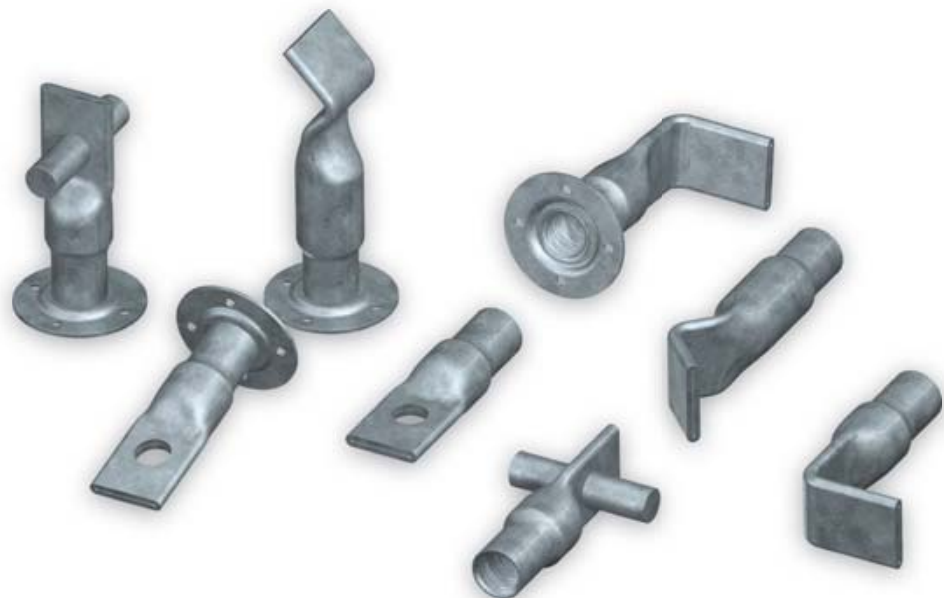
Sandwich anchor system

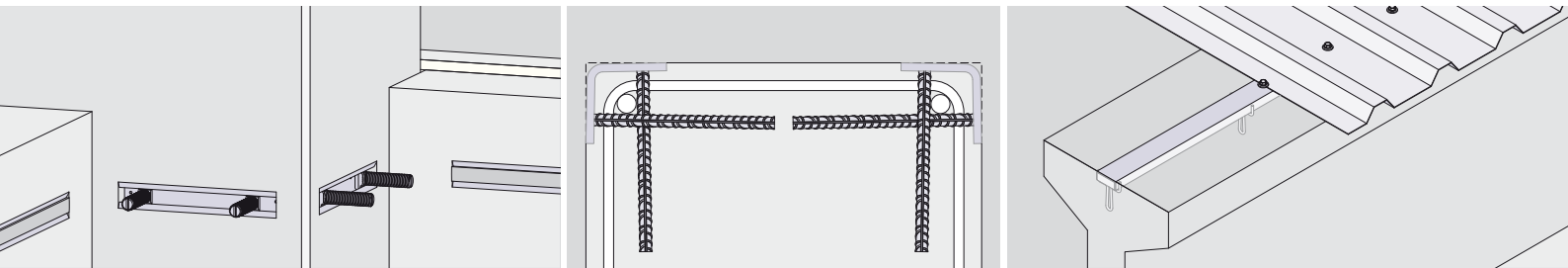
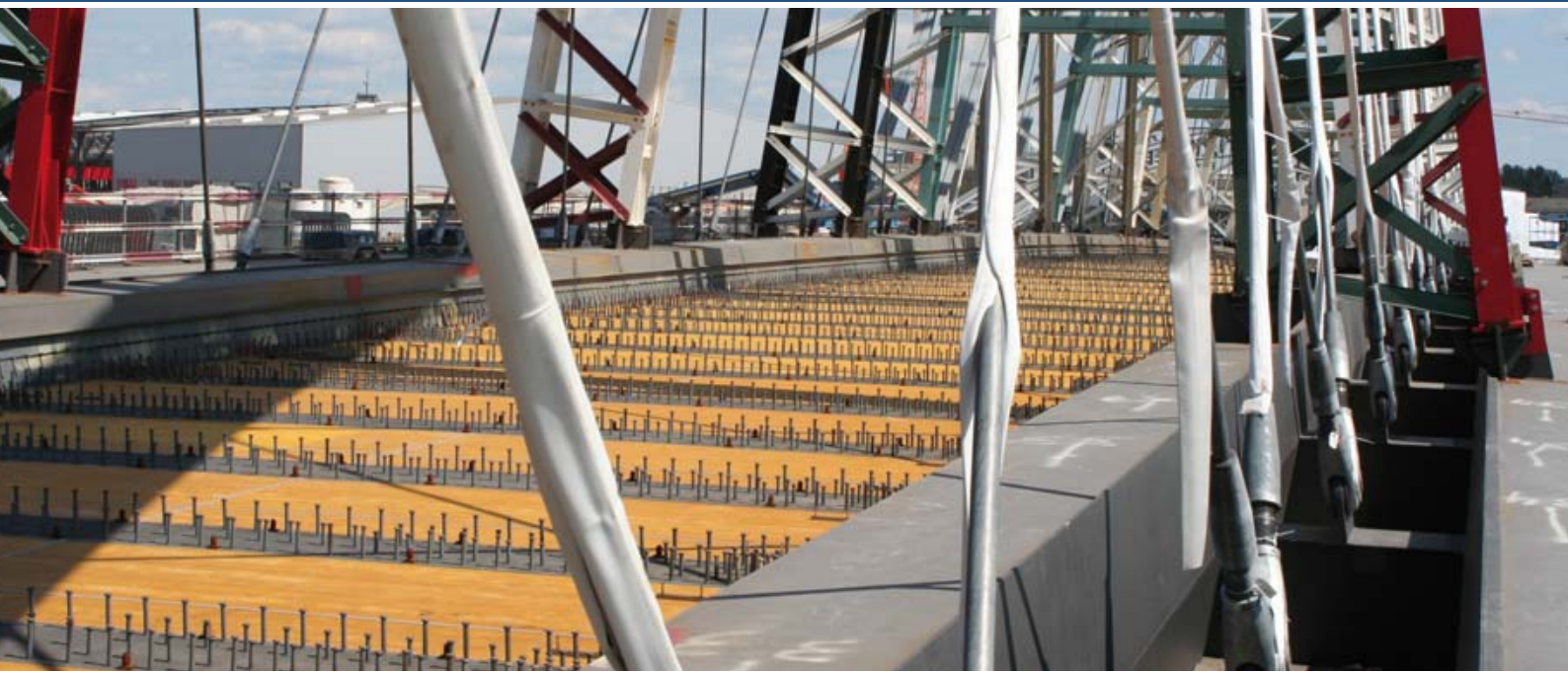




- high-performance system for all fixings
- four different insert types cover numerous installation situations
- time-saving due to fixing points planned in advance

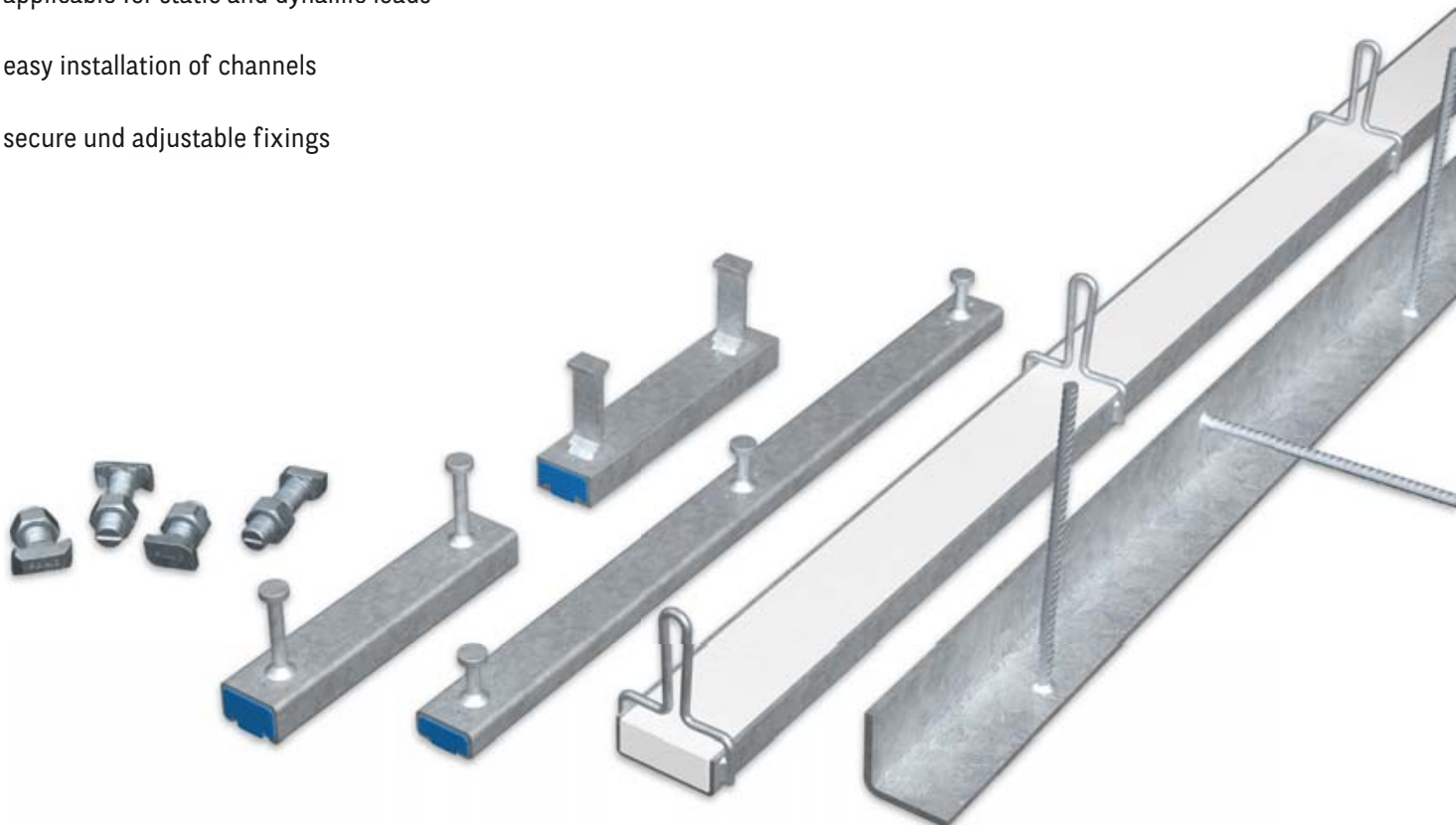
Fixing sockets

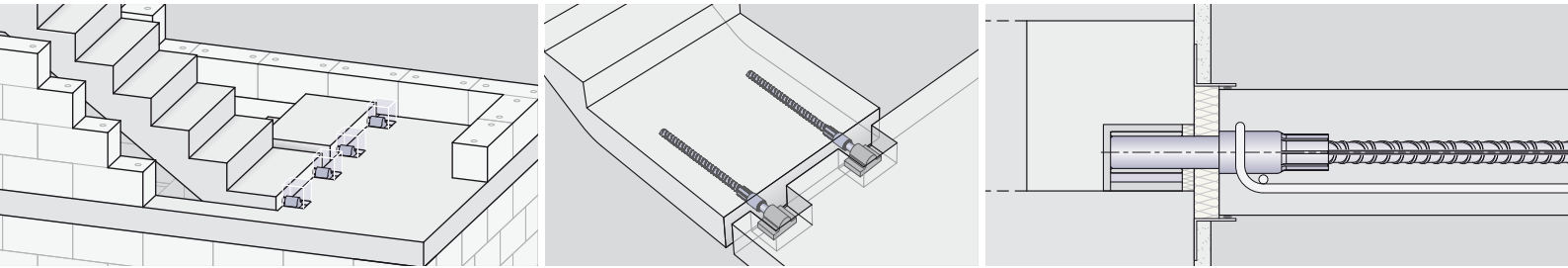
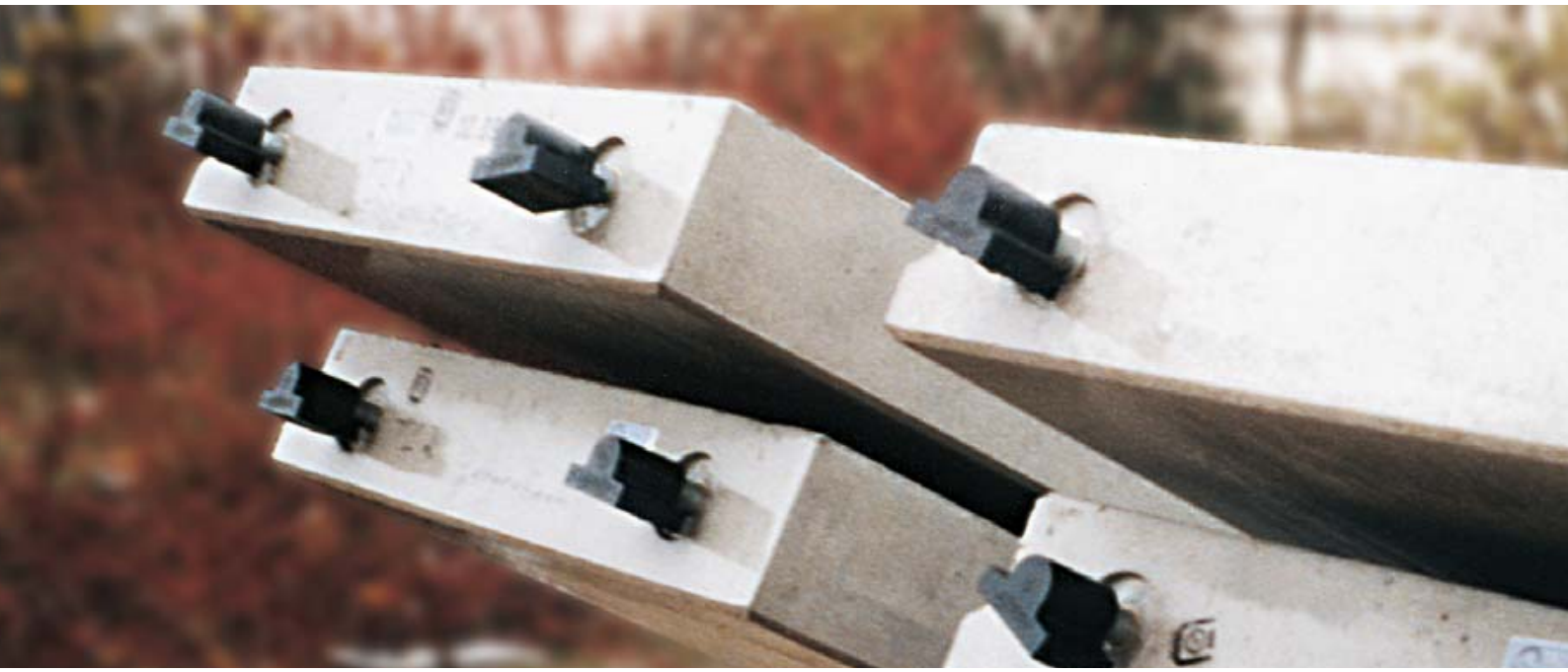




- wide range of channels, hot-rolled and cold-formed
- applicable for static and dynamic loads
- easy installation of channels
- secure und adjustable fixings

Cast-in channel, Trapezoidal channels and Corner guard

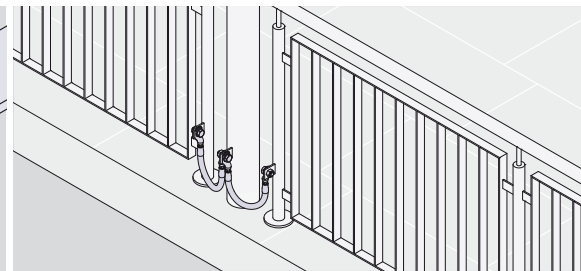
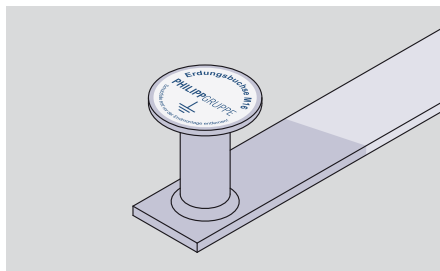
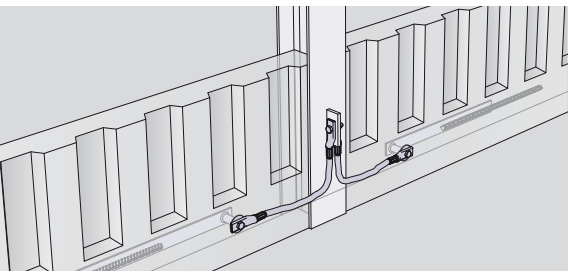




- noise reduction system with certified structural standard of LGA Würzburg
- several stair designs possible because different threaded anchors were already covered by the certified structural standard
- proofed mounting distances up to 80 mm
- better noise reduction than required in German standard DIN 4109 Part 2
- complete solution made of stainless steel available

Noise reduction system





- earthing of units close to high-voltage lines
- no mix-up possibility as one thread size fulfils all requirements
- fast and error-free mounting of the earthing cable due to ready-made systems
- earthing sleeve approved by the Österreichischen Bundesbahn (ÖBB) and Deutschen Bundesbahn (DB)

Earthing technology



Imprint

PHILIPP GmbH

Lilienthalstrasse 7-9
D-63741 Aschaffenburg

Managing Director:

Martin Philipp
Thorsten Philipp

Responsible:

Thorsten Philipp

Companies Register:

Amtsgericht Aschaffenburg

HRB-No.:

896

Ust-IdNo.:

DE 132084295

Strength and stability PHILIPPGROUP

Our customers trust us to deliver. We do everything in our power to reward their faith and we start each day intending to do better than the last. We provide strength and stability in an ever-changing world.

Welcome to the PHILIPP Group.

Sustainable
solutions

PHILIPP
GROUP

 **PHILIPP GmbH**

Lilienthalstrasse 7-9
D-63741 Aschaffenburg
Tel.: + 49 (0) 6021 / 40 27-0
Fax: + 49 (0) 6021 / 40 27-440
info@philipp-gruppe.de

24 Std. Hydraulikservice
+ 49 (0) 6021 / 40 27-500

PHILIPP GmbH

RoBlauer Strasse 70
D-06869 Coswig/Anhalt
Tel.: + 49 (0) 34903 / 6 94-0
Fax: + 49 (0) 34903 / 6 94-20
info@philipp-gruppe.de

24 Std. Hydraulikservice
+ 49 (0) 6021 / 40 27-500

PHILIPP GmbH

Sperberweg 37
D-41468 Neuss
Tel.: + 49 (0) 2131 / 3 59 18-0
Fax: + 49 (0) 2131 / 3 59 18-10
info@philipp-gruppe.de

24 Std. Hydraulikservice
+ 49 (0) 2131 / 3 59 18-333

PHILIPP ACON Hydraulik GmbH

Am grünen Jäger 3
D-38836 Dardesheim
Tel.: + 49 (0) 34922 / 95 68-0
Fax: + 49 (0) 34922 / 95 68-29
info@philipp-gruppe.de

 **PHILIPP Vertriebs GmbH**

Leogangerstraße 21
A-5760 Saalfelden / Salzburg
Tel.: + 43 (0) 6582 / 7 04 01
Fax: + 43 (0) 6582 / 7 04 01 20
info@philipp-gruppe.at

Visit us at the Internet: www.philipp-group.de